

1 Rhythm

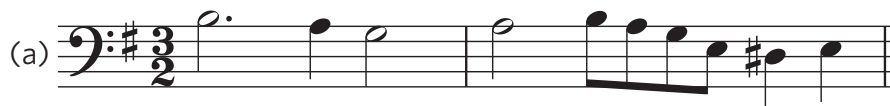
/15

1.1 (a) $\frac{3}{8}$ (3)

(b) $\frac{4}{2}$

(c) $\frac{3}{4}$

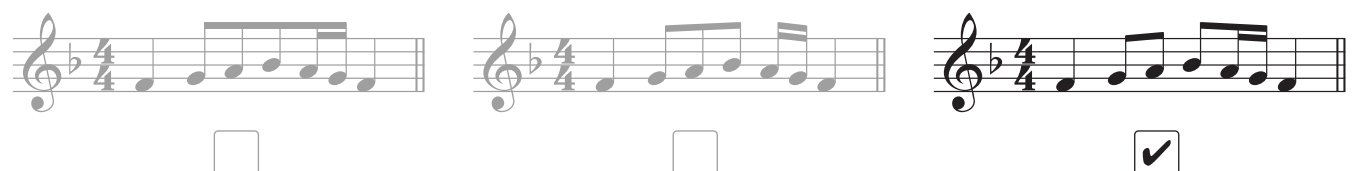
1.2 (5)



1.3 (a) 6 (2)

(b) 4

1.4 (1)



1.5 (3)

1.6 (1)

2 Pitch /15

- 2.1 (a) F# (b) B (c) A (6)
 (d) C (e) Bb (f) F#

2.2 (a) (b) (2)

2.3 (4)

(a) (b)

(c) (d)

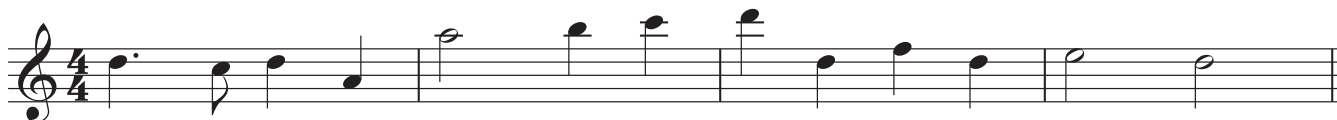
- 2.4 (a) **TRUE** (3)
 (b) **FALSE**
 (c) **TRUE**

3 Keys and Scales /15

3.1 (1)

3.2 (1)

3.3 (3)



3.4 (a) E minor (2)

(b) F major

3.5 TRUE (1)

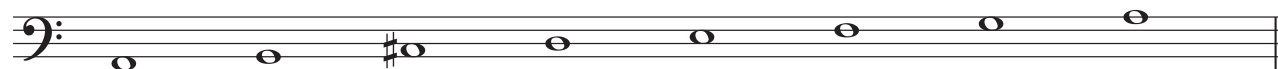
3.6 (1)



3.7 (2)



3.8 (2)



3.9 X C# (2)

Y E

4 Intervals

/10


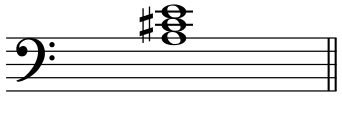
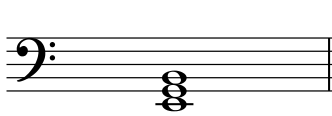
- (a) 4th (b) 7th (c) 5th (10)
- (d) 5th (e) 7th (f) 2nd
- (g) 2nd (h) 8th/8ve (i) 3rd
- (j) 6th

5 Tonic Triads

/10

- 5.1 (a) **TRUE** (2)
- (b) **FALSE**

- 5.2 (3)

(a)  (b)  (c) 

- 5.3 (a) G major (5)
- (b) D major
- (c) Eb major
- (d) F major
- (e) A minor

6 Terms and Signs

/5

molto means:

very, much

 means:

slightly separated

dal segno means:

repeat from the sign 

(5)

dolce means:

sweet

Allegretto means:

fairly quick

7 Music in Context

/5

7.1 TRUE

(1)

7.2 5

(1)

7.3 (a) E

(3)

(b) bar 8

(c) bar 5